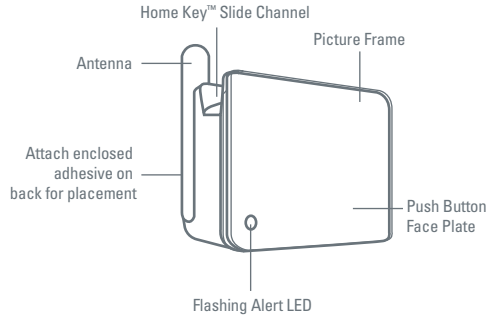


Reminder Sensor Components



Pre-programmed Options Include:

- Change Air Filter
- Empty Dehumidifier
- Change Batteries
- Take Medicine
- Take Vitamins
- Feed Pet
- Change Water Filter
- Get Oil Changed
- Take Out Garbage
- Water Grass
- Cut Grass
- Visit Mom
- Fertilize Lawn
- Water Plants

FCC Statement

(Compliance Statement, Part 15.19): This device complies with Part 15 of the FCC Rules. Operation is subject to the following two conditions: (1) this device may not cause harmful interference, and (2) this device must accept any interference received, including interference that may cause undesired operation.

WARNING (Part 15.21): Changes or modifications not expressly approved by the party responsible for compliance could void the user's authority to operate this equipment.

To comply with FCC's RF exposure limits for general population/uncontrolled exposure, the antenna(s) used for this transmitter must be installed to provide a separation distance of at least 20 cm from all persons and must not be co-located or operating in conjunction with any other antenna or transmitter.

Industry Canada Statement

The term "IC" before the certification/registration number only signifies that the Industry Canada technical specifications were met.

Interference

This equipment has been tested and found to comply with the limits for a Class B digital device, pursuant to Part 15 of the FCC rules. These limits are designed to provide reasonable protection against harmful interference in a residential installation. This equipment generates, uses, and can radiate radio frequency energy and, if not installed and used in accordance with the instructions, may cause harmful interference to radio communications. However, there is no guarantee that interference will not occur in a particular installation. If this equipment does cause harmful interference to radio or television reception, which can be determined by turning the equipment off and on, then the user is encouraged to try to correct the interference by one or more of the following measures:

- Reorient or relocate the receiving antenna
- Increase the separation between the equipment and the receiver
- Connect the equipment into a power source on different circuit than the receiver.

Sensor Maintenance and Battery Replacement

Cleaning the sensor

Clean with a soft, dry cloth.

To check sensor battery level

Using the Home Key, highlight the sensor icon. Click the thumbwheel once and note the battery status on the bottom line of the screen.

To check if sensor battery is low or depleted

When sensor battery is low, a flashing low battery icon appears on the Home Key above the sensor icon, and the screen is amber in color. When a battery is depleted, a question mark will appear above sensor icon.

Replacing a depleted battery

Remove the depleted battery and replace with one lithium CR123A 3V battery, available through the Internet and anywhere camera and camcorder supplies are sold.

IM00416005E Rev. 2
Part No.: 67A5009H02
© 2006 Eaton Corporation

EATON

HOMEheartbeat™
🕒 **Reminder Sensor**

EATON

Reminder Sensor

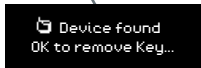
1 Set up

CARRY the sensor, battery, and the Home Key to the location where you want to place it.

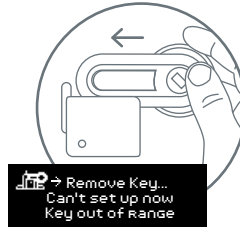
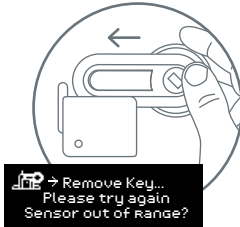
OPEN the sensor cover and insert the battery. The green LED light inside the sensor should flash four times if the battery is good. Close the cover.

CLICK the Home Key thumbwheel to wake the screen, and **SLIDE** the Home Key into the Slide Channel on the top of the sensor. The Home Key screen should say:

Please wait...
Device found
OK to remove Key.



If you slide the Home Key into the sensor Slide Channel and the Home Key screen shows either of the following messages, it means that the Home Key or sensor may be outside the range of the Base Station.



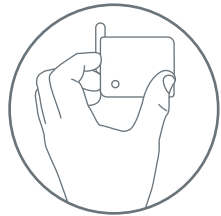
If the Home Key or sensor is out of range, you can:

- Add a Home Heartbeat Range Extender between the Base Station and Reminder Sensor, or
- select an alternate location for the Reminder Sensor, or
- try moving the Base Station to a more central location in your home. Then, complete Step 1 again.

2 Place

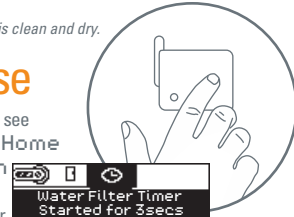
If the sensor is in range of the Base Station, **MOUNT** it to a surface in a convenient location by attaching either the enclosed adhesive tape on the back or using two #4 wood screws (not included).*

*Be sure that the area of installation is clean and dry.



3 Test and use

RUN a quick test of the system to see how it works. Earlier, you set **In-Home Awareness to Alarm on Time's Up!** Using the Home Key, highlight the Reminder Sensor icon and **DOUBLE-CLICK** the thumbwheel. Scroll to "Change time?" and **CLICK** once. Highlight **15 Seconds (demo)** and **CLICK** to select. **CLICK Done, Go back?** to finish setup.



PRESS the front of the sensor, which is one big button. The system will start counting to 15 seconds. When the time is up, the Home Key will flash red and beep to alert you, and the green light on the front of the sensor will flash. To reset the sensor, simply press the front. The green light will go out, and the Home Key will start counting.



Now you can return to the **Change time?** options and select the reminder time you prefer.



Need help? Call **1-800-813-2199** for customer support or visit www.homeheartbeat.com

If Your Reminder Sensor . . .

- will not respond, make sure the battery in the sensor is installed correctly.
- does not send a signal to the Base Station, move the sensor to the Base Station closer (or consider getting a Home Heartbeat Range Extender).

EATON