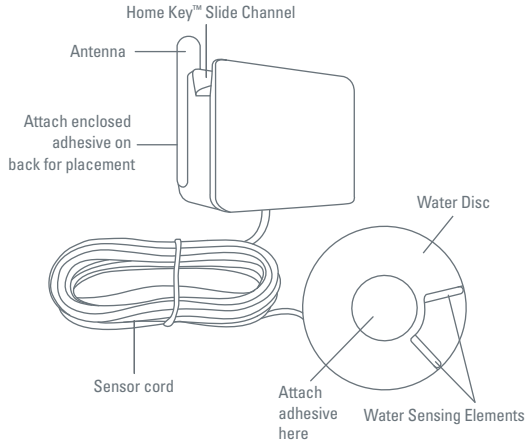


Water Sensor Components



Water Sensor Uses:

- Under Sink
- Water Heater
- Bathroom Floor
- Storage Area
- Garage
- Utility Sink
- Fountain
- Sump Pump
- Mud Room
- Laundry Room
- Under Washing Machine
- Fish Tank
- Attic
- Garden

FCC Statement

(Compliance Statement, Part 15.19): This device complies with Part 15 of the FCC Rules. Operation is subject to the following two conditions: (1) this device may not cause harmful interference, and (2) this device must accept any interference received, including interference that may cause undesired operation.

WARNING (Part 15.21): Changes or modifications not expressly approved by the party responsible for compliance could void the user's authority to operate this equipment.

To comply with FCC's RF exposure limits for general population/uncontrolled exposure, the antenna(s) used for this transmitter must be installed to provide a separation distance of at least 20 cm from all persons and must not be co-located or operating in conjunction with any other antenna or transmitter.

Industry Canada Statement

The term "IC" before the certification/registration number only signifies that the Industry Canada technical specifications were met.

Interference

This equipment has been tested and found to comply with the limits for a Class B digital device, pursuant to Part 15 of the FCC rules. These limits are designed to provide reasonable protection against harmful interference in a residential installation. This equipment generates, uses, and can radiate radio frequency energy and, if not installed and used in accordance with the instructions, may cause harmful interference to radio communications. However, there is no guarantee that interference will not occur in a particular installation. If this equipment does cause harmful interference to radio or television reception, which can be determined by turning the equipment off and on, then the user is encouraged to try to correct the interference by one or more of the following measures:

- Reorient or relocate the receiving antenna
- Increase the separation between the equipment and the receiver
- Connect the equipment into a power source on different circuit than the receiver.

Sensor Maintenance and Battery Replacement

Cleaning the sensor and sensing elements

Clean the sensor body and disc with a soft, dry cloth. If calcium builds up on the sensing elements, gently clean with an old toothbrush dipped into a mixture of one part distilled vinegar and one part water.

To check sensor battery level

Using the Home Key, highlight the sensor icon. Click the thumbwheel once and note the battery status on the bottom line of the screen.

To check if sensor battery is low or depleted

When sensor battery is low, a flashing low battery icon appears on Home Key above the sensor icon, and the screen is amber in color. When a battery is fully depleted, a question mark will appear above sensor icon.

Replacing a depleted battery

Remove the depleted battery and replace with one lithium CR123A 3V battery, available through the Internet and anywhere camera and camcorder supplies are sold.

IM00416003E Rev. 2
Part No.: 67A5010H02
© 2006 Eaton Corporation

EATON

HOMEheartbeat™
Water Sensor

EATON

Water Sensor

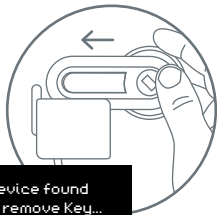
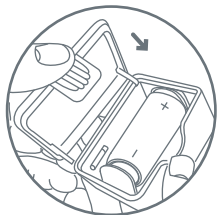
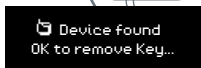
1 Set up

CARRY the sensor, battery, and the Home Key to the location where you want to place it.

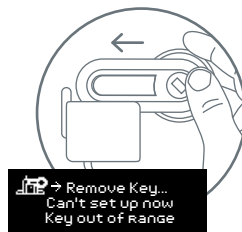
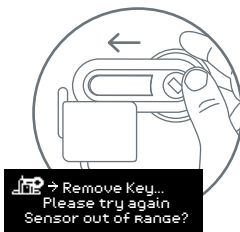
OPEN the sensor cover and insert the battery. The green LED light inside the sensor should flash four times if the battery is good. Close the cover.

CLICK the Home Key thumbwheel to wake the screen, and **SLIDE** the Home Key into the Slide Channel on the top of the sensor. The Home Key screen should say:

Please wait...
Device found
OK to remove Key.



If you slide the Home Key into the sensor Slide Channel and the Home Key screen shows either of the following messages, it means that the Home Key or sensor may be outside the range of the Base Station.



If the Home Key or sensor is out of range, you can:

- Add a Home Heartbeat Range Extender between the Base Station and Water Sensor, or
- select an alternate location for the Water Sensor, or
- try moving the Base Station to a more central location in your home. Then, complete Step 1 again.

2 Test

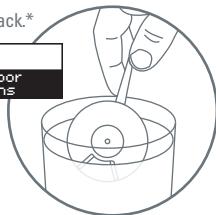
ROLL OVER and highlight the Water Sensor icon on the Home Key.



Test the sensor by dipping the water disc into a cup of tap water—water must touch both sensing elements at once. Check the Home Key screen for feedback.*



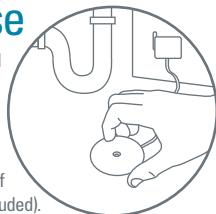
* Water that is free of minerals or sediment, such as bottled or distilled water, will not activate the sensor.



3 Place and use

PLACE the sensor body on a vertical surface that will not get wet, and the water disc on a horizontal surface where you expect water to pool.*

MOUNT the parts by attaching the enclosed adhesive tape to the back of each or using #4 wood screws (not included).



* Be sure that the area of installation is clean and dry.



Need help? Call **1-800-813-2199** for customer support or visit www.homeheartbeat.com

If Your Water Sensor . . .

- will not respond, make sure the battery in the sensor is installed correctly.
- does not send a signal to the Base Station, move the sensor and Base Station closer together (or consider getting a Home Heartbeat Range Extender).

EATON